



大结晶电熔氧化镁

White Fused Magnesia

公司简介

恒锐镁制品——联合荣大集团旗下高新技术企业，专注大结晶电熔氧化镁研发与生产，采用当今最先进的自动化清洁生产工艺。岫岩与奈曼两大生产基地合计产能6.5万吨/年，是全球产能最大、品质最高的大结晶电熔氧化镁制造商。

Hengrui Magnesium Products, a high-tech enterprise under Allied Rongda Group, specializes in the research, development and production of large crystal white fused magnesia. Employing the world's most advanced automated clean production technology, its two production bases in Xiuyan and Naiman have a combined capacity of 65,000t/a, making Hengrui the world's largest and highest-quality manufacturer of large crystal fused magnesia.

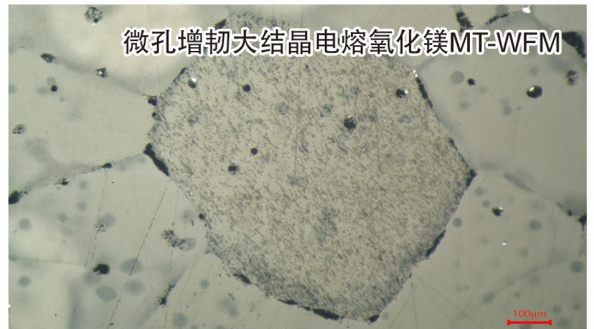
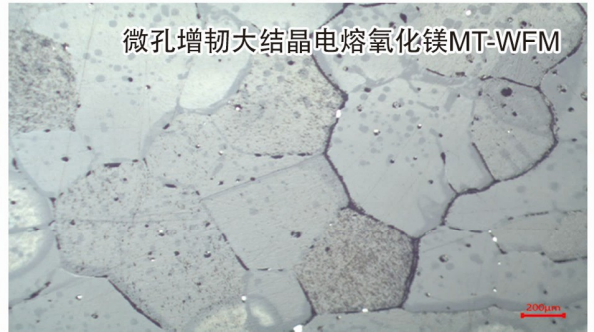
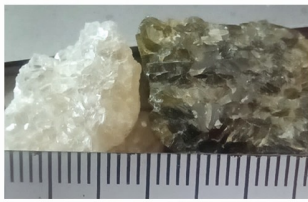


技术指标

牌号 Brand	理化指标 Parameters	MgO ≥%	CaO ≤%	SiO ₂ ≤%	Al ₂ O ₃ ≤%	Fe ₂ O ₃ ≤%	灼减/LOI ≤%	体密/BD g/cm ³
WFM99LC	典型值Typical	99.40	0.22	0.10	0.02	0.23	0.02	3.52
	保证值index	99.00	0.25	0.10	0.02	0.25	0.02	3.52
WFM985LC	典型值Typical	98.67	0.68	0.22	0.04	0.34	0.03	3.52
	保证值index	98.50	0.90	0.30	0.09	0.40	0.03	3.52
WFM98LC	典型值Typical	98.28	0.84	0.28	0.09	0.45	0.05	3.52
	保证值index	98.00	1.00	0.35	0.09	0.50	0.05	3.50
WFM978LC	典型值Typical	98.01	0.90	0.40	0.09	0.54	0.06	3.50
	保证值index	97.80	1.00	0.45	0.09	0.55	0.08	3.50
WFM975LC	典型值Typical	97.55	1.35	0.40	0.09	0.63	0.07	3.50
	保证值index	97.50	1.40	0.45	0.09	0.65	0.08	3.48
WFM97LC	典型值Typical	97.25	1.52	0.49	0.09	0.62	0.07	3.46
	保证值index	97.00	1.60	0.50	0.10	0.70	0.08	3.45
WFM黑连接LC 瓦片Tiles	典型值Typical	97.53	1.36	0.42	0.10	0.53	0.07	3.50
	保证值index	97.50	1.40	0.45	0.10	0.55	0.08	3.48
WFM97LC 杂色Mixed	典型值Typical	97.05	1.65	0.45	0.11	0.87	0.07	3.48
	保证值index	97.00	1.80	0.55	0.11	0.90	0.08	3.42



自动化生产远程操作主控室
Remote operation control room for automated production



微孔增韧大结晶电熔氧化镁 (MT-WFM)

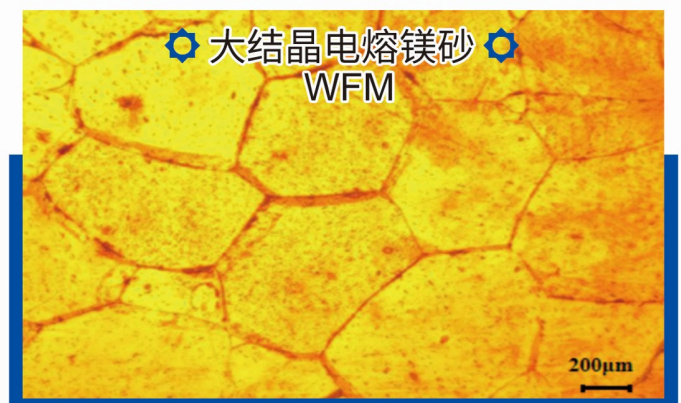
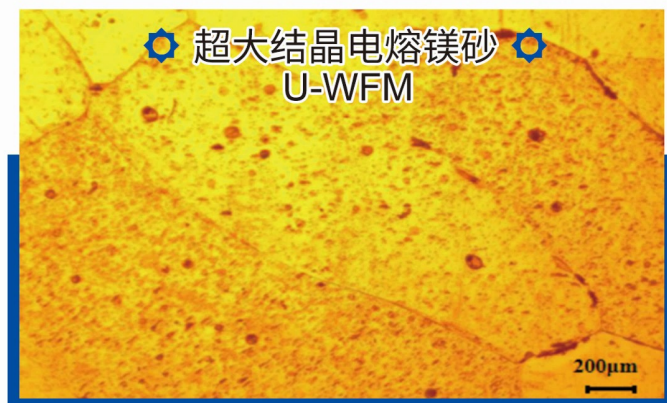
采用独特工艺与装备,直接熔融 200~300 目超细浮选精矿悬浮轻烧粉,制得新型 MT-WFM。高温电熔重结晶时,方镁石晶粒快速生长,熔浆内裹挟的空气没来得及迁移逸出,在晶体内形成大量微米级闭孔并伴有少量晶界微裂纹,可缓解方镁石高热膨胀系数引发的热应力,抑制裂纹扩展,实现晶内闭孔增韧。

A new type of MT-WFM is produced by directly melting 200-300 mesh ultrafine flotation concentrate suspended light-burned powder via unique processes and equipment. During electrofusion recrystallization, periclase grains grow rapidly, with grain boundary movement exceeding the migration and escape rate of enclosed pores. This forms numerous microscale closed pores and some intergranular microcracks in grains, relieving thermal stress from periclase's high thermal expansion coefficient, inhibiting crack propagation, and achieving intragranular closed-pore toughening.

超大结晶电熔氧化镁 (U-WFM)

通过引入微量 Cr_2O_3 活化晶格并促进晶体生长,超大结晶电熔镁砂晶粒尺寸普遍达 2000-5000µm,约为普通大结晶电熔镁砂的 3 倍。 Cr_2O_3 固溶于方镁石晶格中,且方镁石晶粒保持直接结合,显著提升了晶体韧性与抗侵蚀性能。

The introduction of trace Cr_2O_3 activates the lattice and promotes crystal growth, resulting in ultra-large crystalline white fused magnesia with a typical grain size of 2000-5000µm, approximately three times that of conventional large crystalline white fused magnesia. Cr_2O_3 is dissolved in the periclase lattice while maintaining direct bonding between periclase grains, significantly enhancing crystal toughness and corrosion resistance.



公司名称: 联合荣大企业集团·恒锐镁制品
工厂地址: 辽宁鞍山市岫岩满族自治县石庙子镇
内蒙古通辽市奈曼旗工业开发区
[Http://hengrui.rongda.com.cn](http://hengrui.rongda.com.cn)

免费热线: **400-1102006 800-8109575**

联系方式: 李娜 13842257587

E-MAIL: xyln@rongda.com.cn

rongda@rongda.com.cn

